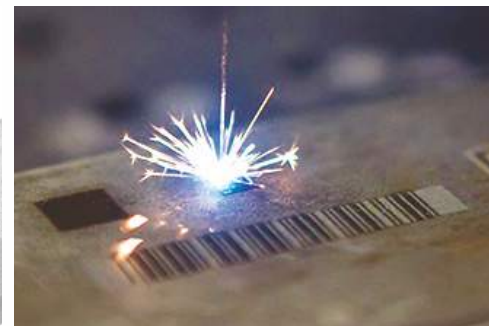


## MANUFACTURER OF LASER MACHINES

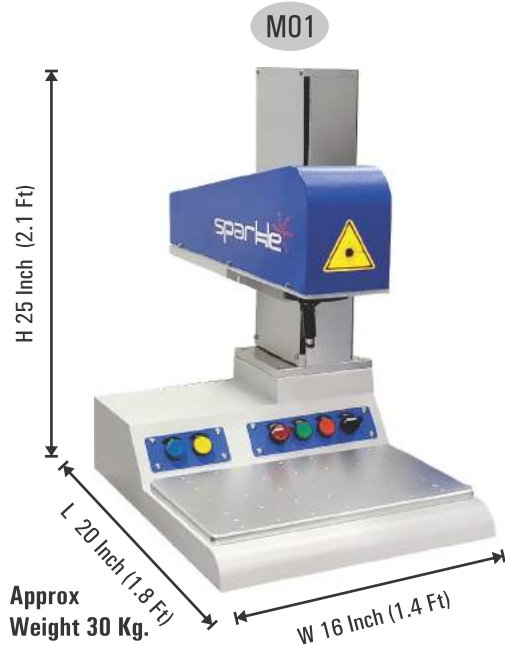


[www.knacksolution.com](http://www.knacksolution.com)

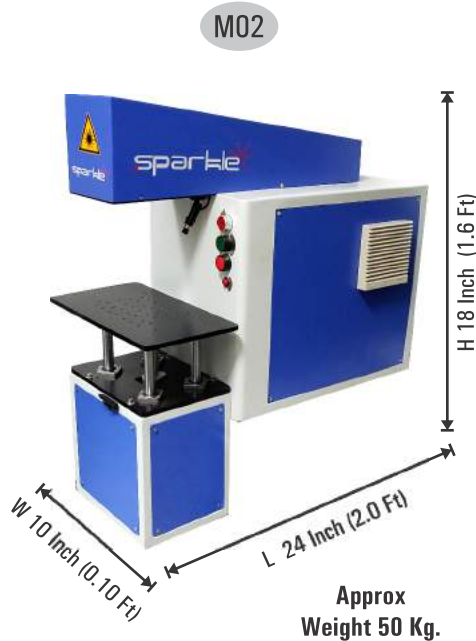
### PRODUCT RANGE

- ▶ Sparkle Laser Marking / Engraving / Cutting Machines
- ▶ Jewellery Laser Hallmarking Machines
- ▶ Jewellery Laser Spot Welding Machines
- ▶ 3D Metal Laser Engraving - Die Making Machine
- ▶ 10x High Speed / Life Metal Tube Machines for Wood / Acrylic
- ▶ CO2 Glass Tube Cutting / Engraving Machines
- ▶ Diamond Cutting Machines- 4P
- ▶ Customized Software Solutions & Automation

## Compact Size Laser Marking/Engraving Machine (with Computer System )



**SMART DESKTOP**



**COMPACT DESKTOP**



**MANUAL DESKTOP**

### SPECIFICATION

Laser Type	: Pulsed Fiber Laser
Average Output Power	: 20 W (Optional 30/50 W)
Wavelength	: 1064 nm
Output Power Stability (Typical)	: 5%
Power Adjusting Range	: 1 ~ 100 %
Resolution Frequency	: 20-500 KHz (Optional)
Beam Quality (M <sup>2</sup> )	: < 1.6
Output Beam Diameter (1/e <sup>2</sup> )	: 6-9 mm
Max. Linear Speed	: Max 12000 mm/s
Marking Depth	: 0.01 ~ 0.3 mm (Material Depended)
Work Area	: 110mm x110 mm
Min. Character Height	: 0.2 mm

### ELECTRICAL

Power Supply Single Phase	: 220V / 50Hz
Power Consumption	: ~ 500 W
Ambient Temperature Range	: 0° to 25° C
Cooling System	: Air Cooling System

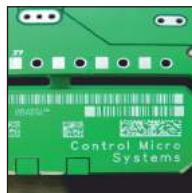


Image Marking



Text Marking

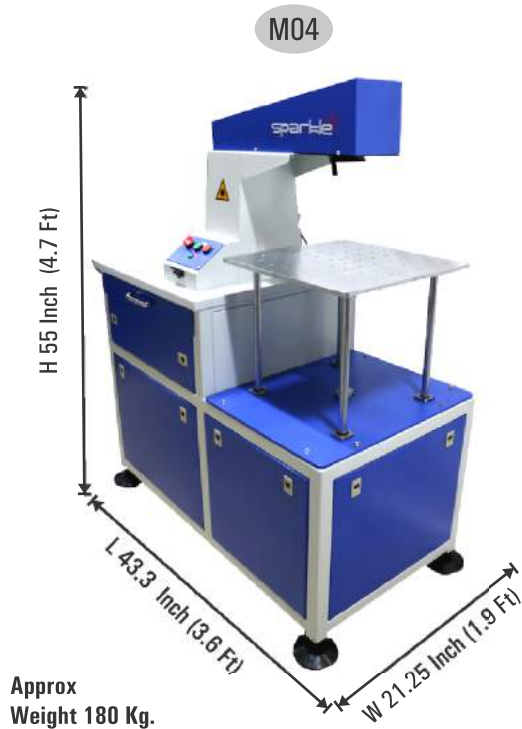
### APPLICATIONS



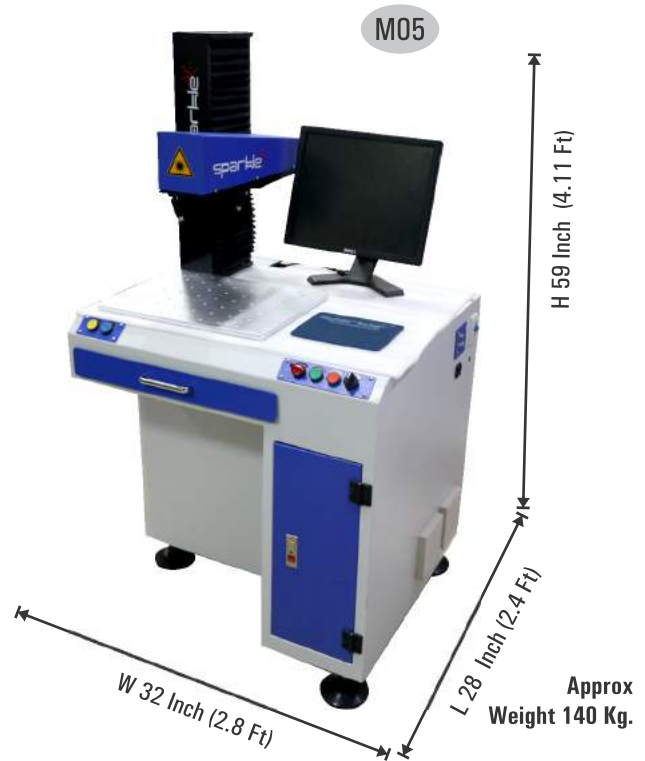
Jewellery Hall Marking, Dies, Jigs, Moulds, Bolts, Screws, Pins and Components

# Laser Marking / Engraving Machine (with Computer System)

www.knacksolution.com



WORK TABLE UP-DOWN & FIXED HEAD



HEAD UP-DOWN & FIXED WORK TABLE

## FEATURES

- Portable machine design with compact size
- Production Report Integration
- Status monitoring and safe shutdown
- Circumferential Markings (Mark Round Parts)
- Maintenance Free with low power consumption (~ 500 W)
- Bar-coding, 2D Data Matrix Codes, Lot Codes, Date Codes
- Real time red beam preview ensures accurate positioning
- Compatible with Surface Marking, Engraving and Texturing
- Support customized software and automation integration
- Scribing operations, Surface Annealing and Etching
- Marking Alphanumerics, Serial Numbers and Part Numbers
- Marking of Logos, Schematics, Complex Graphics (PLT, SVG, DXF, DWG) and Pictures (BMP, JPEG, PNG)
- Auto Marking functionality, Boundary & Round Preview

Working Area : 150mm x 150mm (Optional 175/220/300)



Colour Marking on SS



Rotary Attachment

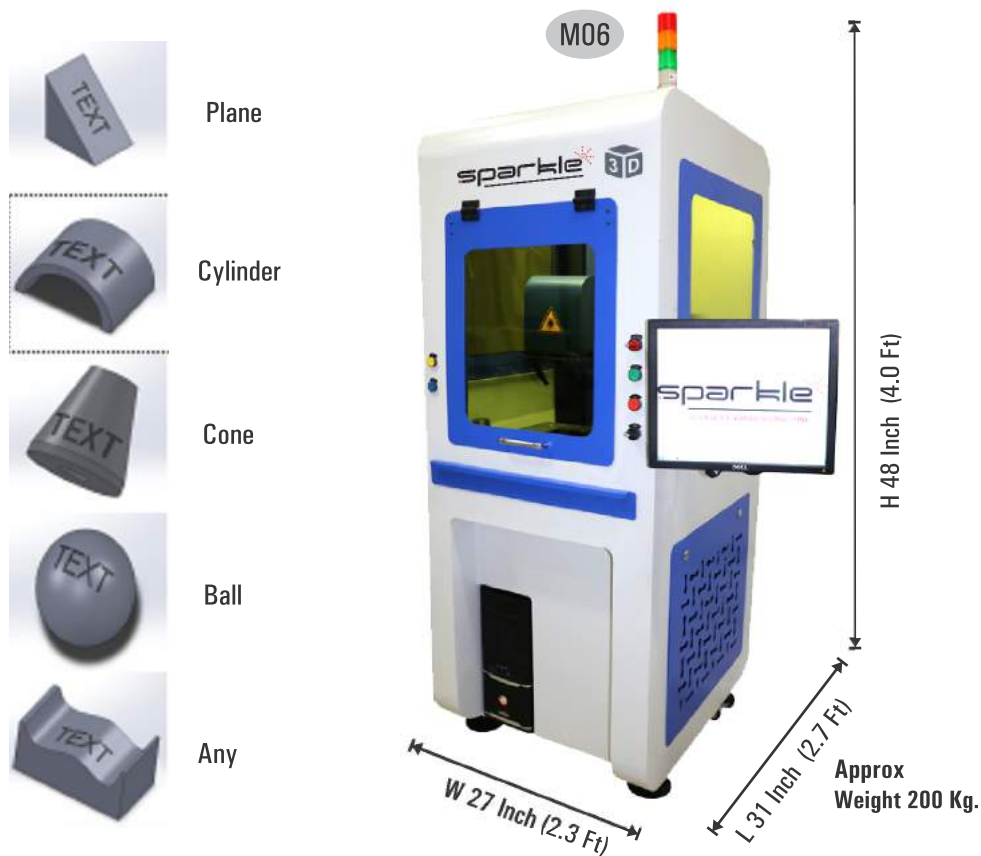
## APPLICATIONS



Aluminum, Stainless Steel, Brass, Titanium, Plastic, Alloy Steel, Bronze, Copper, Platinum and so on



## 3D Metal/Die Laser Engraving Machine (with Computer System)



### SPECIFICATION

Model	: KS-SP3D
Output Power	: 50W / 100W
Repeat Frequency	: 30K-200KHZ/5K-200KHZ
Minimum line width	: 0.03mm
Marking speed	: < 10000mm/s
Cooling system	: Air Cooling
Power Supply	: AC 110V/220V optional/50-60HZ
Marking Area	: 110mmx110mm/300mmx300mm (optional)
Laser Power	: 20W/30W/50W/100W(optional)
Laser Wavelength	: 1064nm
Maximum Power	: < = 1500W
Working environment	: temperature 10-35°C/humidity 5-75%

### APPLICATIONS



Aluminum, SS, Brass, Titanium, Alloy Steel, Bronze, Copper, Gold, Silver, Platinum

## Laser Spot Welding / Soldering Machine (with Computer System)

M07

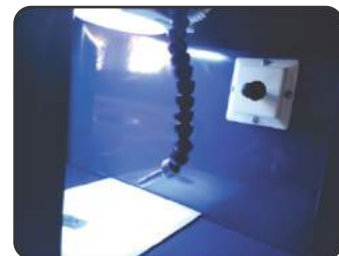


M08



### SPECIFICATION

Model No.	: SLW-100 / SLW-200 / SLW-300
Output Power	: 100 W / 200 W / 300 W - based on requirement
Single-pulse energy	: 0-100 J
Machine Design Type	: Desktop / Vertical
Laser Source	: ND:YAG
Laser Wavelength	: 1064 nm
Pump lamp	: Pulsed Xenon Lamp
Pulse Width	: 0.1-15 ms adjustable
Pulse Repeated Frequency	: 1 ~ 20 Hz adjustable
Welding spot diameter	: 0.2-1.5 mm adjustable
Observing System	: Microscope / CCD - based on requirement
Cooling System	: Water chiller
Power Supply	: Single Phase AC 220V $\pm$ 10%, 50Hz / 60HZ, 4 KW
Running Environment	: Temperature 5°C-28°C Humidity 5%-70%

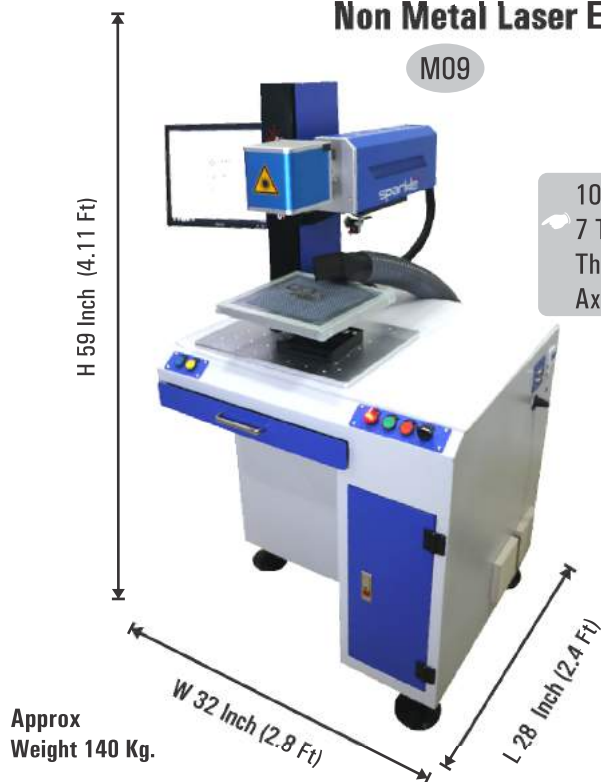


### APPLICATIONS



Gold, Silver, Argentine, Copper, Platinum, Titanium, Nickel, Aluminum, Stainless Steel and so on

## Non Metal Laser Engraving/Cutting Machine (Co2 Laser)



M09

10 Times Faster &  
7 Times More Life  
Than Glass Tube  
Axis Base Machine



M10

### RF Co2 Metal Tube With Scan Head

#### SPECIFICATION

Output Power	: 30W (50W, 100W)
Frequency & Duty Cycle	: 0 ~ 25KHZ, 0 ~ 100%DC
Beam diameter	: 1.8±0.2mm
Max Engraving Speed	: 1-60000 mm / min x 10 Times more Faster
Max Cutting Speed	: 1-10000 mm / min
Up/Down Size	: 300mm
Graphics file format	: DST, PLT, BMP, DXF
Computer System	: Yes
Cooling Way	: Air Compressor
Operating temperature	: 0-45°C
supply voltage	: Ac110 - 220V ± 10%, 50-60Hz
Power Consumption	: < 575
Life	: < 50000 Hour

#### APPLICATIONS

### Co2 Glass Tube Axis Base Machine

#### SPECIFICATION

Output Power	: 100W (80W, 130W, 150W)
Cooling Mode	: Water Cooling & Protection System
Types of Work Table	: Blades Table & HoneyComb
Compatible Software	: CorelDRAW, Auto cad, Photoshop, Ai
Engraving Speed	: 1-60000 mm / min
Cutting Speed	: 1-10000 mm / min
Transmit System	: Square guide rail and Belt System
Machine Software	: Ruida RDWorks
Support Graphics Format	: DST, PLT, BMP, DXF
Air Cooling System	: Air Compressor
Working Voltage	: Ac110 - 220V ± 10%, 50-60Hz or
Operation Temperature	: 0-40°C
Driving System	: Stepper motor and driver System
Life	: < 7000 Hour



Wood, Jade, Acrylic, Glass, Ceramic, Leather, Marble, Paper, Rubber, Wood Veneer, Plastic, Tiles,



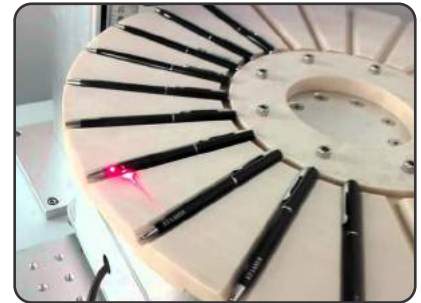
## Industrial Automation / Special Features



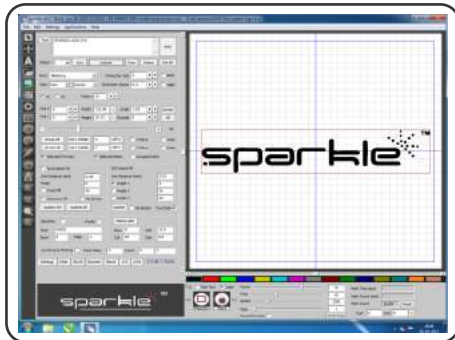
Industrial Conveyor Automation



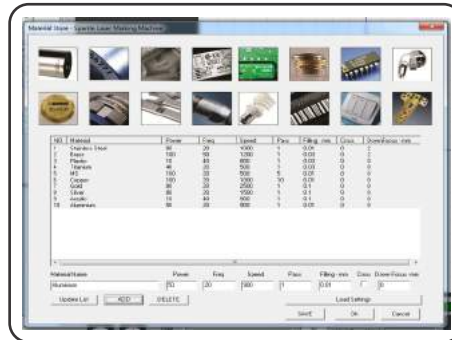
Indexing Table



Round Table Automation



Sparkle Software  
Customized / In House R&D



Material Store



Production Report



Colour Marking Grid



Operator Friendly Machine Design

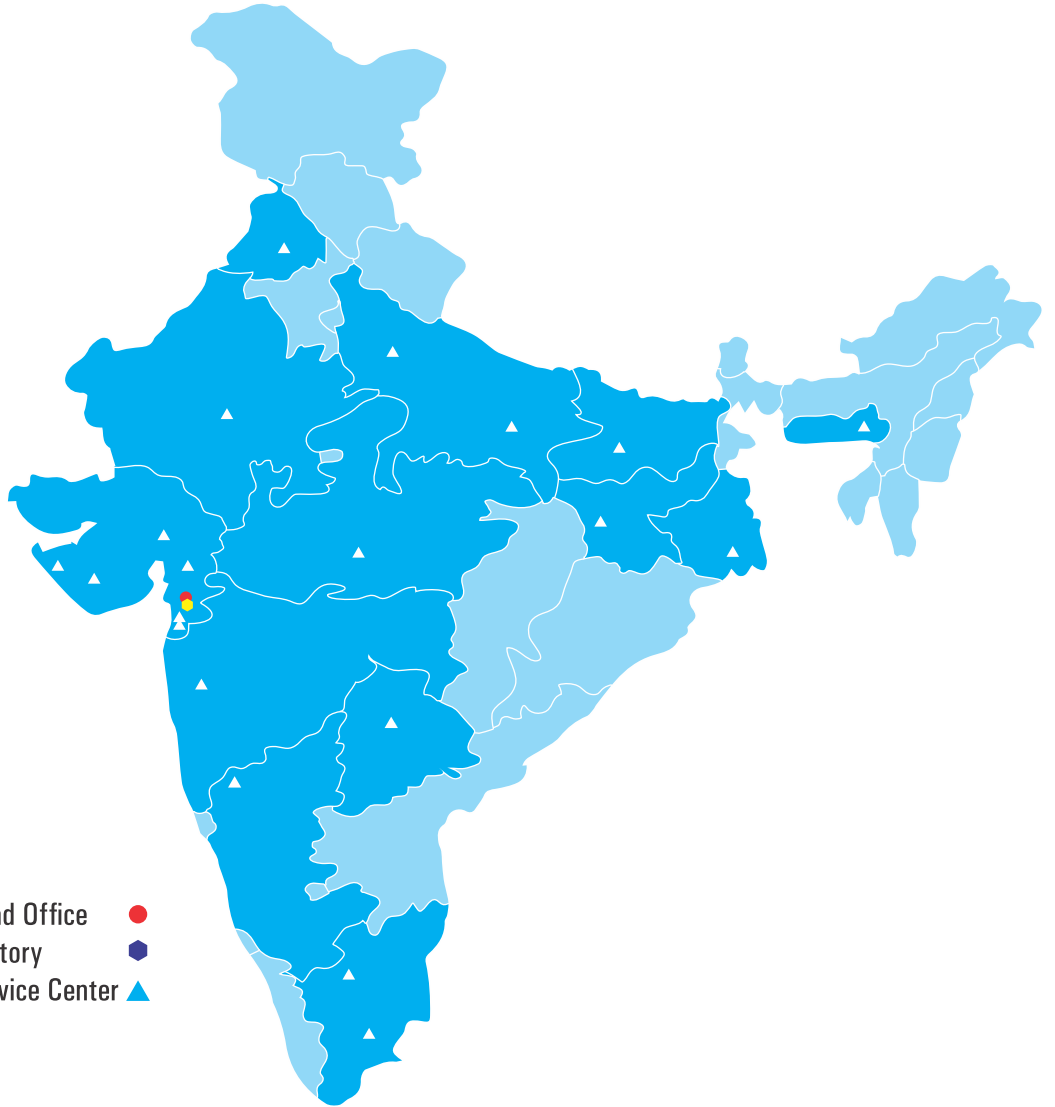


Online Service Support

- **Surat**

- Ahmedabad
- Bangalore
- Belguam
- Bihar
- Chandigadh
- Coimbatore
- Delhi
- Haydrabad
- Jamnagar
- Jaypur
- Kolkata
- Ludhiyana
- Mumbai
- Patna
- Pune
- Rajkot
- Trichy
- Vadodra
- Valsad
- Vapi
- & All Over India

Head Office ●  
Factory ■  
Service Center ▲



An ISO 9001:2008

**Head Office**

P-884, Old Gidc-Katargam,  
Near Indian Diamond Institute,  
Fulpada, Katargam, Surat – 395004  
Customer Care : +91 90999 31599, +91 63544 74148

**Sales Office**

303, Bussiness Center, Opp. Bombay Petrol Pump,  
9/10, Bhaktinagar, Station Plot,  
Gondal Road, Rajkot -360 002.

**web** : [www.knacksolution.com](http://www.knacksolution.com)

**E-mail** : [info@knacksolution.com](mailto:info@knacksolution.com)  
[info@sparklelasermarking.com](mailto:info@sparklelasermarking.com)



Scan QR & Save Contact